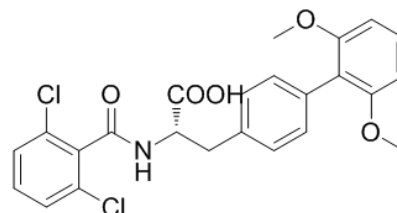


Product Name : TR-14035
Cat. No. : PC-44703
CAS No. : 232271-19-1
Molecular Formula : C₂₄H₂₁Cl₂NO₅
Molecular Weight : 474.3333
Target : Integrin
Solubility : DMSO: ≥ 41 mg/mL



Biological Activity

TR-14035 (TR14035) is a potent, orally bioavailable, dual $\alpha 4\beta 7/\alpha 4\beta 1$ integrin antagonist with IC₅₀ of 7/87 nM. TR-14035 blocks the binding of human $\alpha 4\beta 7$ to an (125)I-MAdCAM-Ig fusion protein with IC₅₀ of 0.75 nM. TR-14035 suppresses antigen-induced lung interleukin (IL)-5 mRNA upregulation, inhibits the leukocyte rolling flux, adhesion and emigration induced by IL4 in rats.

References

- Sircar I, et al. *Bioorg Med Chem*. 2002 Jun;10(6):2051-66.
Cortijo J, et al. *Br J Pharmacol*. 2006 Mar;147(6):661-70.
Tsuda-Tsukimoto M, et al. *Pharm Res*. 2006 Nov;23(11):2646-56.

Caution: Product has not been fully validated for medical applications. Lab Use Only!

E-mail: tech@probechem.com